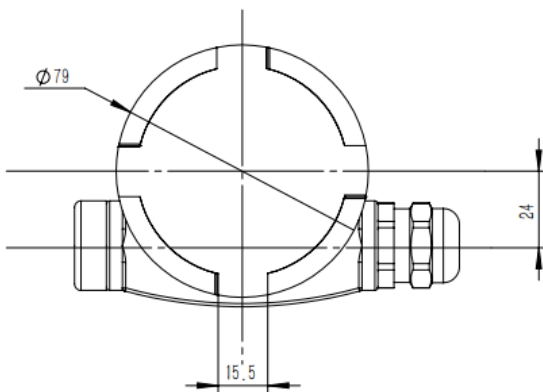
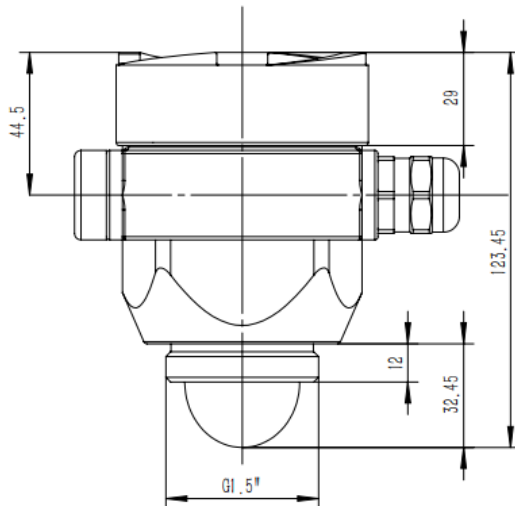
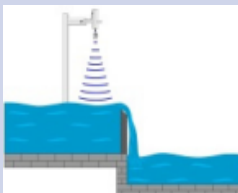



The LTI1600 is the ideal sensor for non-contact level measurement in simple applications. It is particularly suitable for open channel application: exp water/wastewater field, rain basins, flume, dam level monitoring.

- High frequency 80GHz, More Focus.
- Accuracy: ± 2 mm(liquid)
- Measuring range up to 30m
- Small emitting angle: $\pm 4^\circ$
- Thread connection, customized flange.
- With display



Product Type	FMCW Radar Level Transmitter
Application	<div>   </div> <ul style="list-style-type: none"> * Open channel water measurement * Standard liquid measurement
Frequency	77GHz-81GHz
Measurement Range	Liquid: 0.2m-30m
Accuracy	±2mm for liquid
Beam Angle	±4°
Material	PBT+GF
Process Connection	Thread (G1.5")and flange (customized)
Process Temperature	-25°C to 60°C
Process Pressure	Normal atmospheric pressure
Signal output	4-20mA / RS485/ Bluetooth/Hart
Power	Two-wire DC 24V (18V~36V)
Protection	IP67
Size	85.5mm*130mm, weight 500g